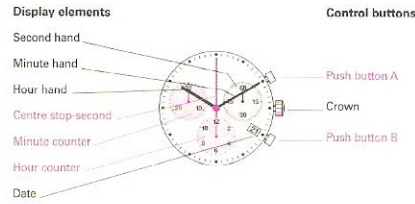


Description of the display and control buttons



Minute counter Push-button A

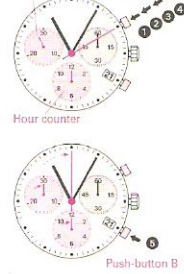


Chronograph: Basic function (Start / Stop / Reset)

Example:

- Start:** Press push-button A.
- Stop:** to stop the timing, press push-button A once more and read the three chronograph hands: 1h / 20min / 10 sec.
- Zero positioning:** Press push-button B. (The three chronograph hands will be reset to their zero positions).

Minute counter Push-button A



Chronograph: Accumulated timing

Example:

- Start:** (start timing)
- Stop:** (e.g. 15 min 5 sec following ①)
- Restart:** (timing is resumed)
- Stop:** (e.g. 13 min 5 sec following ③) = 28 min 10 sec (The accumulated measured time is shown)
- Reset:** The three chronograph hands are returned to their zero positions.

Please note:

Following ③, the accumulation of the timing can be continued by pressing push-button A (Restart / Stop, Restart / Stop, ...)

Minute counter Push-button A



Chronograph: Intermediate or interval timing

Example:

- Start:** (start timing)
- Display interval:** e.g. 10 minutes 10 seconds (timing continues in the background)
- Making up the measured time:** (the 3 chronograph hands are quickly advanced to the ongoing measured time).
- Stop:** (Final time is measured)
- Reset:** The 3 chronograph hands are returned to their zero position

Please note:

Following ③, further intervals or intermediates can be displayed by pressing push-button B (display interval / make up measured time, ...)

Minute counter Center stop-second

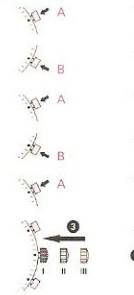


Adjusting the chronograph hands to zero position

Example:

One or several chronograph hands are not in their correct zero positions and have to be adjusted (e.g. following a battery change).

- Pull out the crown to position III (all 3 chronograph hands are in their correct or incorrect zero position).
- Keep push-buttons A and B depressed simultaneously for at least 2 seconds (the centre stop-second rotates by 360° → corrective mode is activated).



Adjusting the centre stop second

Single step ✓ A 1 x short
Continuous ✓ A long

Adjusting the next hand B

Single step ✓ A 1 x short
Continuous ✓ A long

Adjusting the hour counter hand (position 6h)

Single step ✓ A 1 x short
Continuous ✓ A long

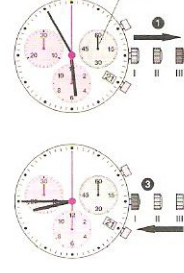
Adjusting the next hand B

Single step ✓ A 1 x short
Continuous ✓ A long

Returning the crown to position I

Termination of the chronograph hands adjustment (can be carried out at any time).

Setting the time



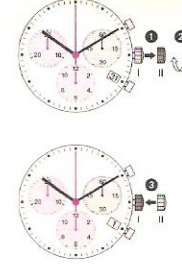
Setting the time

- Pull out the crown to position III (the watch stops to run).
- Turn the crown until you reach the correct time 8:45.
- Push the crown back into position I.

Please note:

In order to set the time to the exact second, ① must be pulled out when the second hand is in position «00» (I). Once the hour and minute hands have been set, ③ must be pushed back into position I at the exact second.

Setting the date (quick mode)



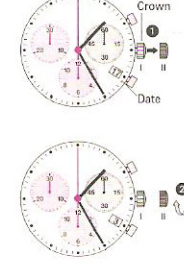
Setting the date (quick mode)

- Pull out the crown to position II (the watch continues to run).
- Turn the crown until the correct date [4] appears.
- Push the crown back into position I.

Please note:

During the date changing phase between 9 PM and 12 PM, the date must be set to the date of the following day.

Setting the date/time following a battery change

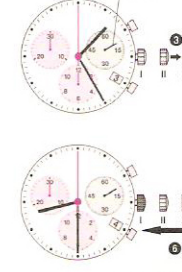


Setting the date/time following a battery change

Example:
- Date / time on the watch: [17] / 1:25 AM
- Present date / time: [4] / 8:30 PM

- Pull out the crown to position II (the watch continues to run).
- Turn the crown until yesterday's date appears [3].

Setting the date/time following a battery change



- Pull out the crown to position III (the watch stops).
- Turn the crown until the correct date [4] appears.
- Continue to turn the crown until the correct time 8:30 PM appears.
- Push the crown back into position I.

Please note:

To set your watch to the exact second, please refer to the chapter entitled «setting the time». Please observe the AM/PM clock rhythm.